

AHST 4342-001 (85802)
History of Media and New Media Art
Fall 2012
Dr. Charissa N. Terranova
University of Texas at Dallas
Arts & Humanities
Monday-Wednesday 1:00-2:15
Class Location: AH2 1.204

September 15, 2012

Elevator: Architecture and Sky in Paris and Chicago

- **1851 London, Great Exhibition of the Works of Industry of All Nations, Crystal Palace by Joseph Paxton**
- **1853-4 New York, Exhibition of the Industry of All Nations, Elisha Otis introduces elevator**
- **1871 Great Fire of Chicago**
- **1884 First Skyscraper, William Le Baron Jenney, Home Insurance Building,**
- **1889 Paris, Exposition Universelle, Gustav Eiffel, Eiffel Tower**

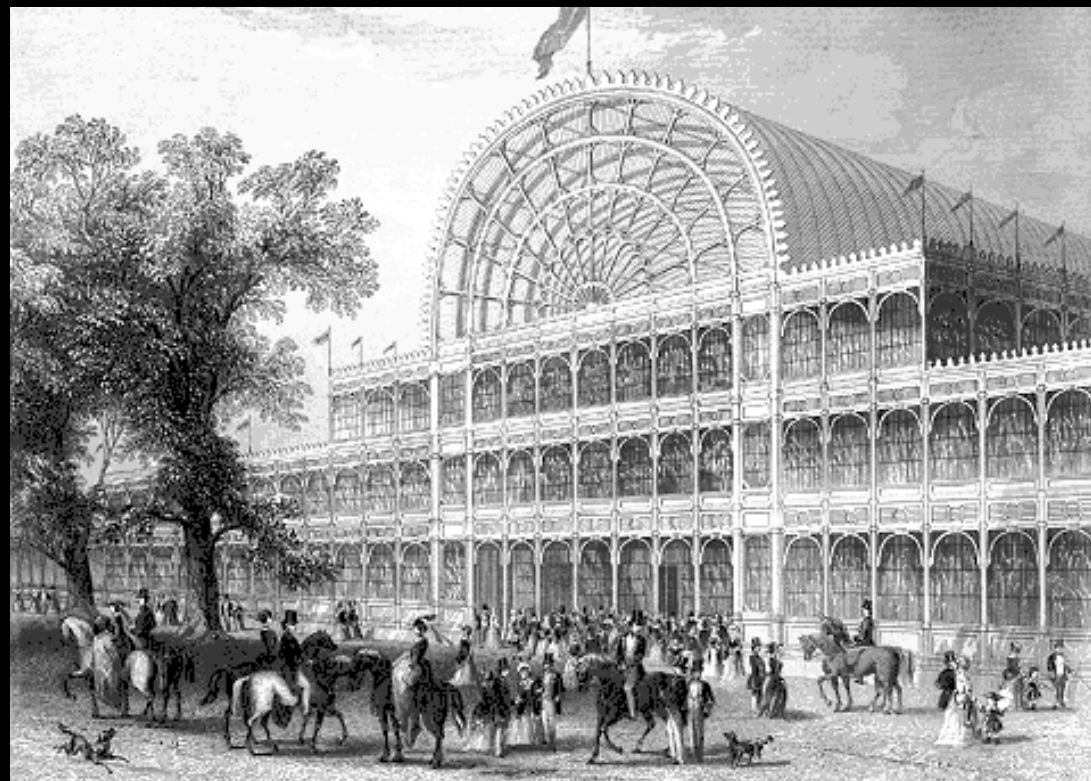


Joseph Paxton, Crystal Palace, London, 1851



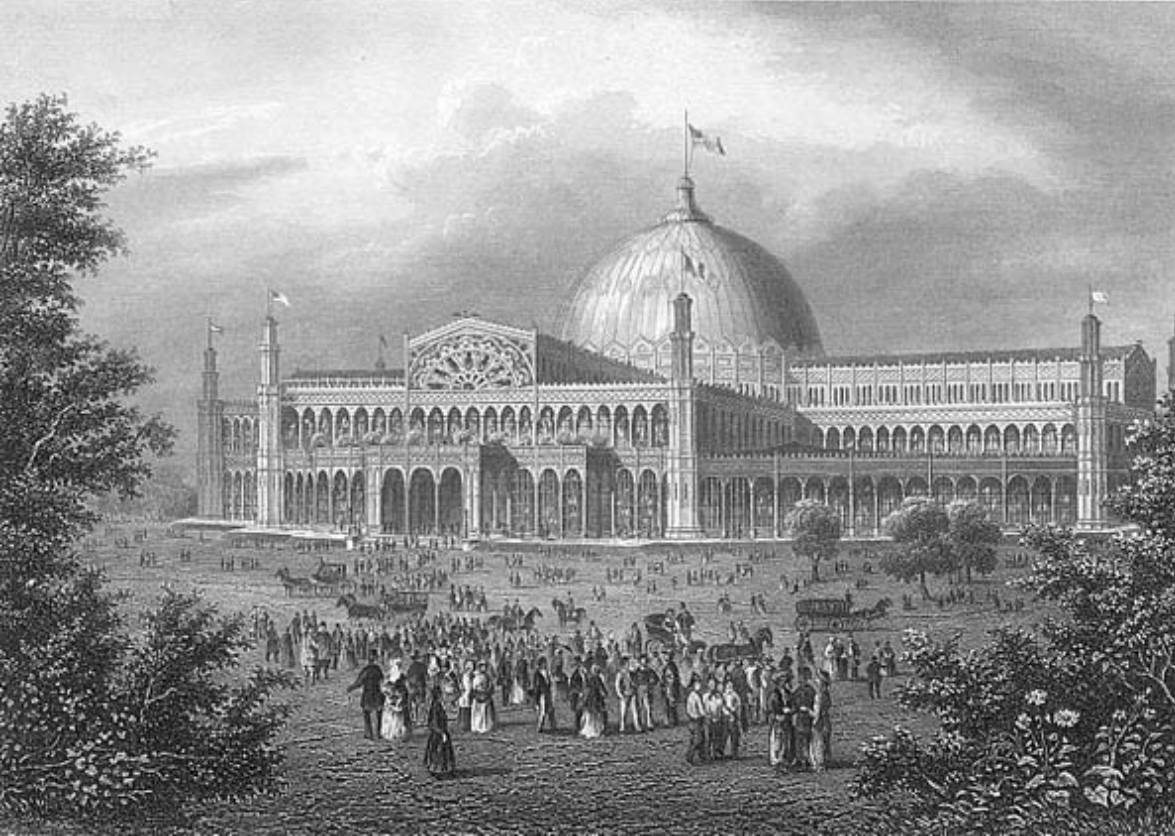
Queen Victoria's Regia Lily











Joseph Paxton, Crystal Palace, New York, 1853



Elisha Otis, Demonstration of Safety Cables on Elevator, New York, 1853



Gustave Eiffel, Eiffel Tower, Paris, 1889



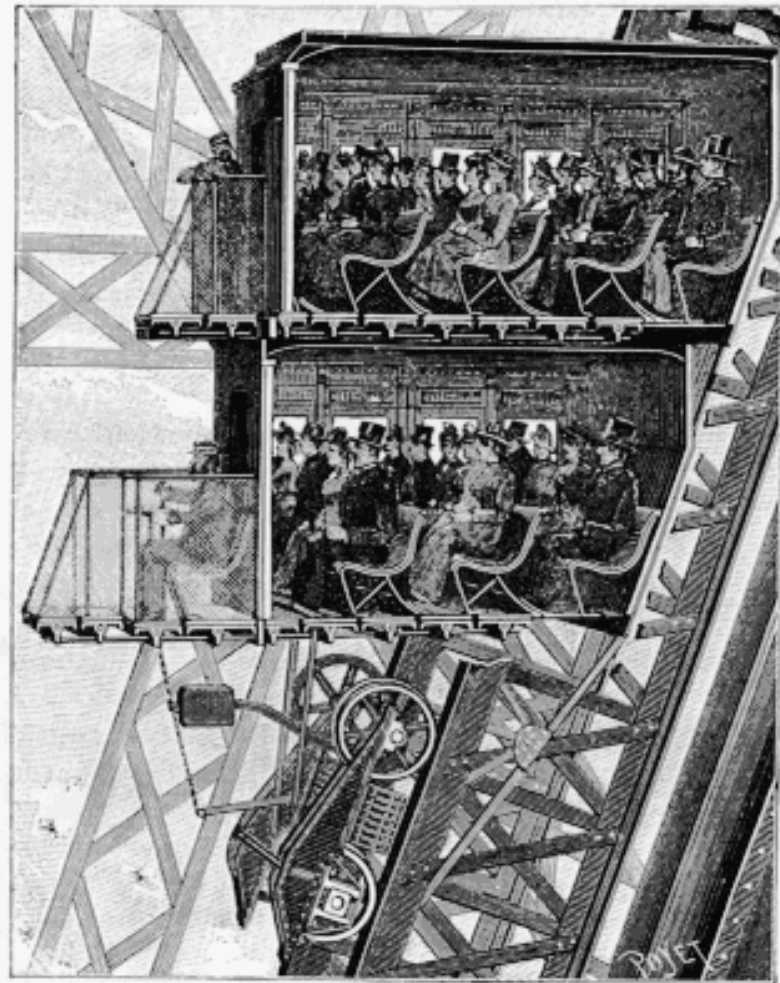
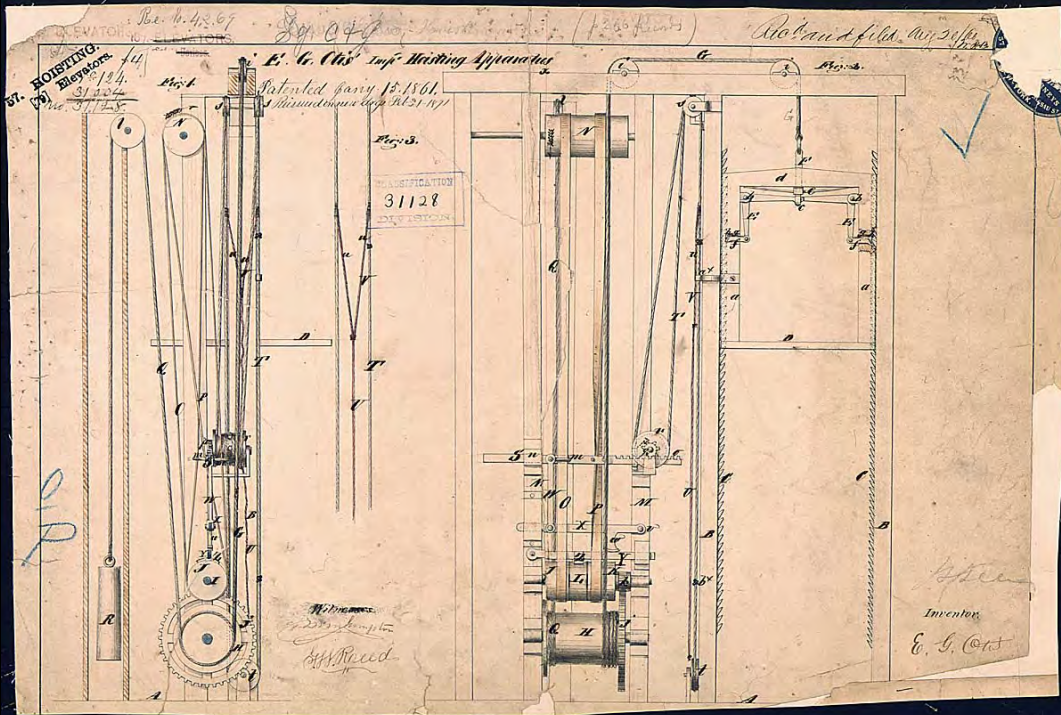


Figure 29.—Section through cabin of the Otis elevator. Note the pivoted floor-sections. As the car traveled, these floor-sections were leveled by the operator to compensate for the change of inclination; however, they were soon removed because they interfered with the loading and unloading of passengers. (From *La Nature*, May 4, 1889, vol. 17, p. 360.)







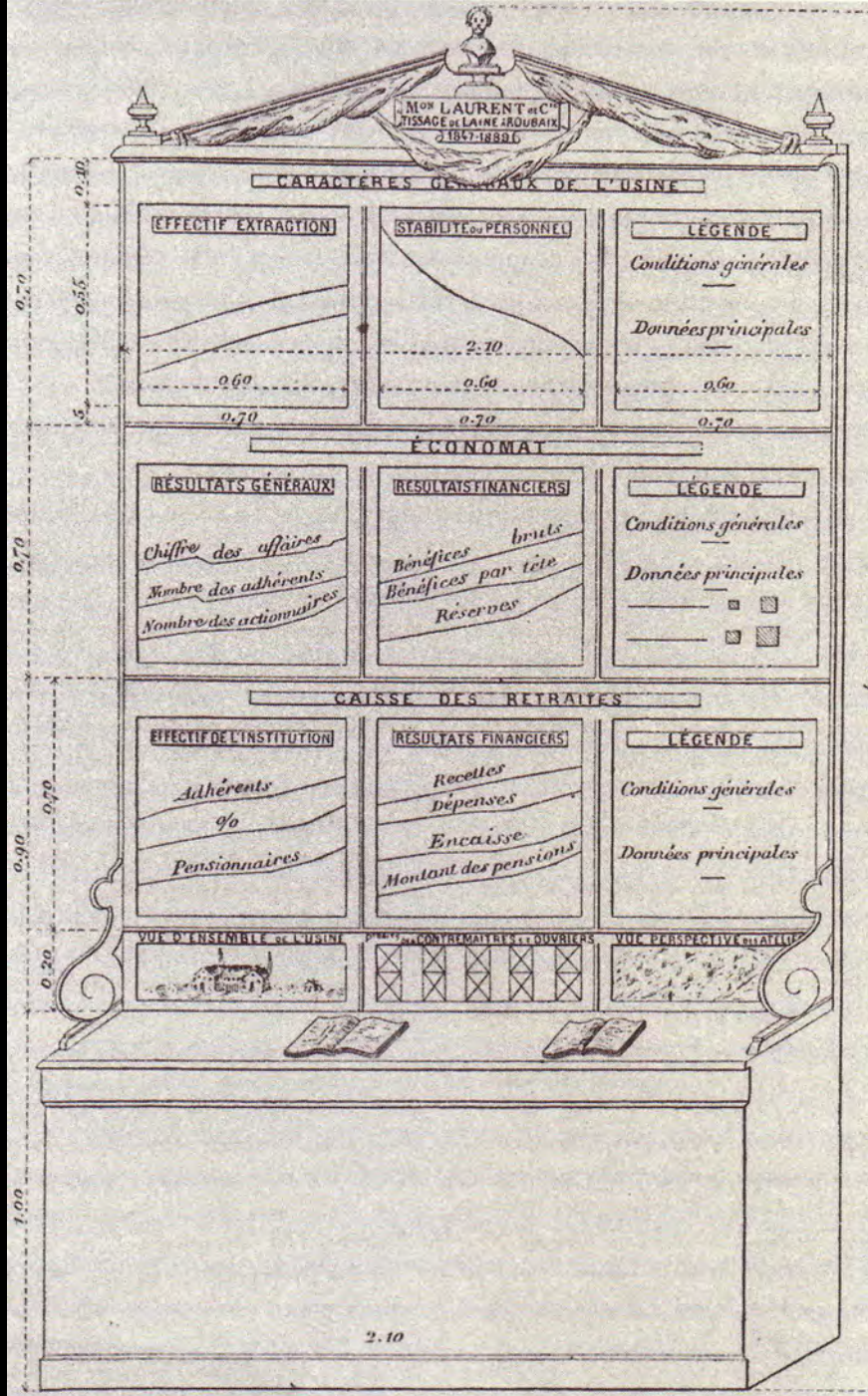


896007

Machinery Hall



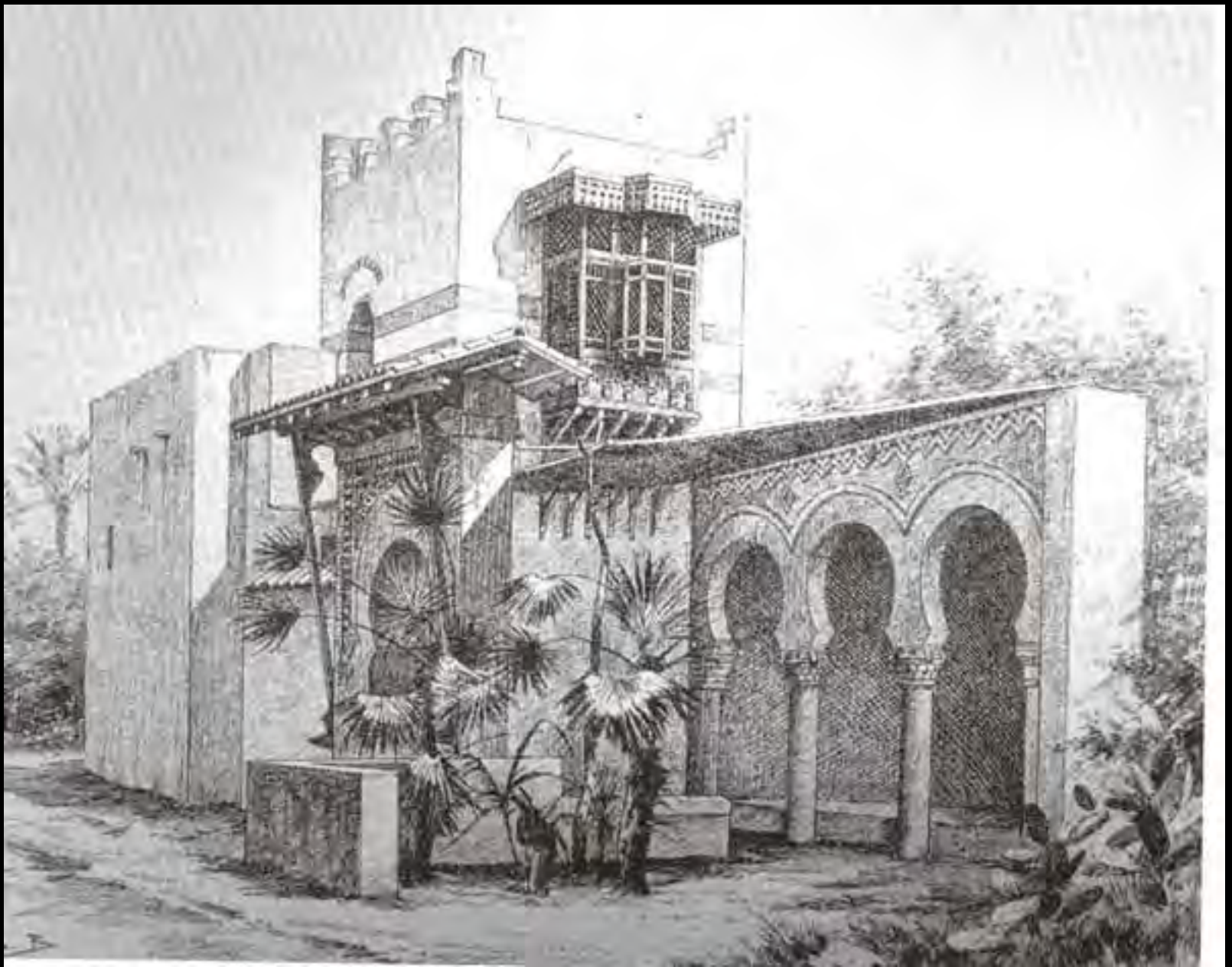
GALERIE DES MACHINES. - MACHINERY HALL.



Social Economy Exhibit



Pavilion of Siam



Arab House



Great Chicago Fire, 1871



BIRD'S-EYE VIEW OF THE BUSINESS DISTRICT OF CHICAGO



[A dense grid of small text labels, likely street names and building identifiers, arranged in columns across the bottom of the map.]

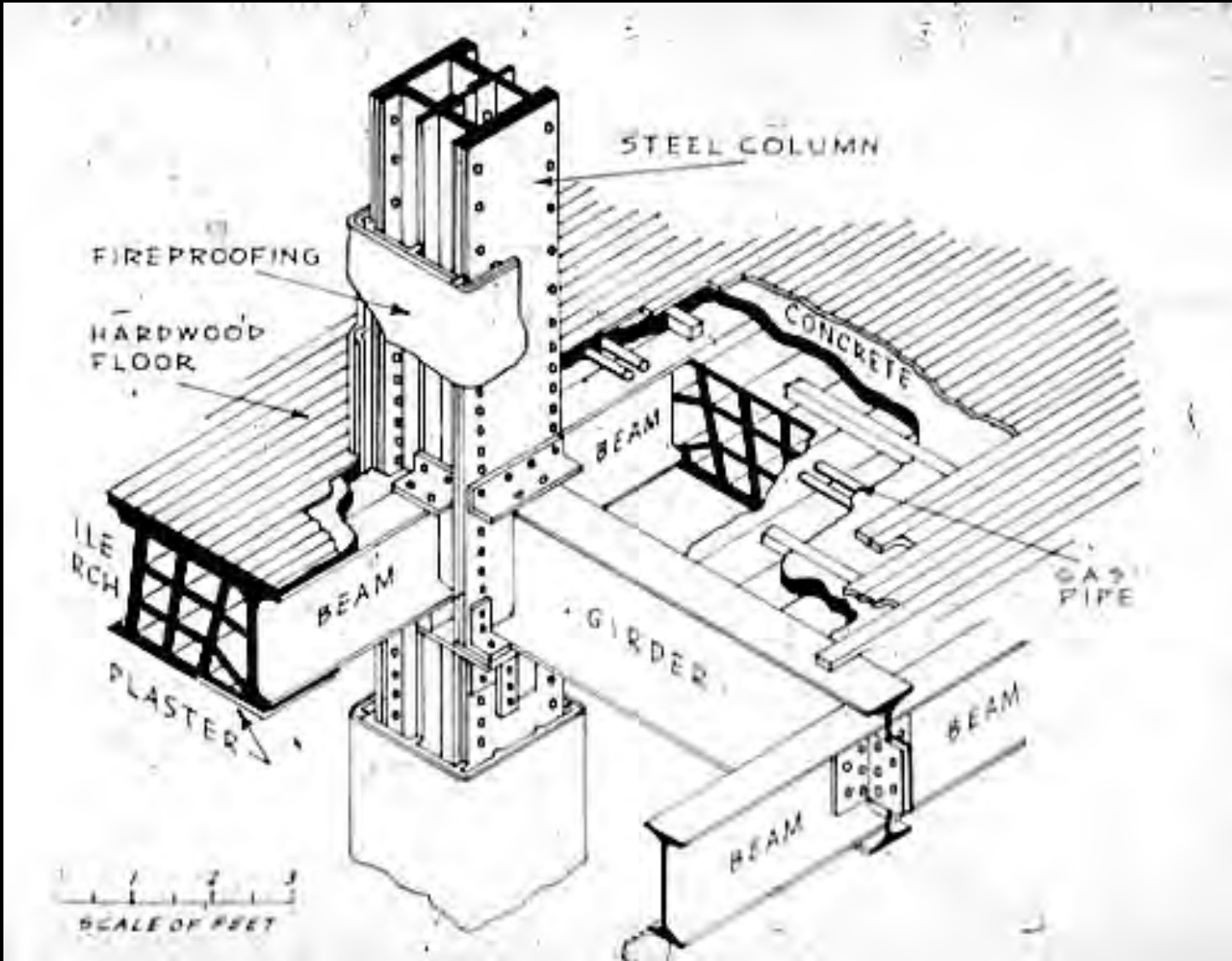


William Le Baron Jenney, Home Insurance Building, Chicago, 1885



William le Baron Jenney, Fair Store, 1890-91







William le Baron Jenney, First
Leiter Building, 1879



William le Baron Jenney, Second Leiter Building, 1890

SIEGEL COOPER & CO., CHICAGO



Second Leiter Building



Burnham & Root, Rookery, 1886





Frank Lloyd Wright, Remodeled Lobby of Rookery, 1905



Burnham & Root, Monadnock, 1891









Burnham & Root, Reliance Building, 1890-95





Carson Pirie Scott & Co.
Building,
State and Madison Sts.,
Chicago.

Louis Sullivan, Carson, Pirie, Scott & Co.,
1899-1904









Adolf Loos, Tribune Tower Competition, 1922 Walter Gropius, Tribune Tower Competition, 1922



Raymond Hood and John M. Howells,
Tribune Tower, 1924

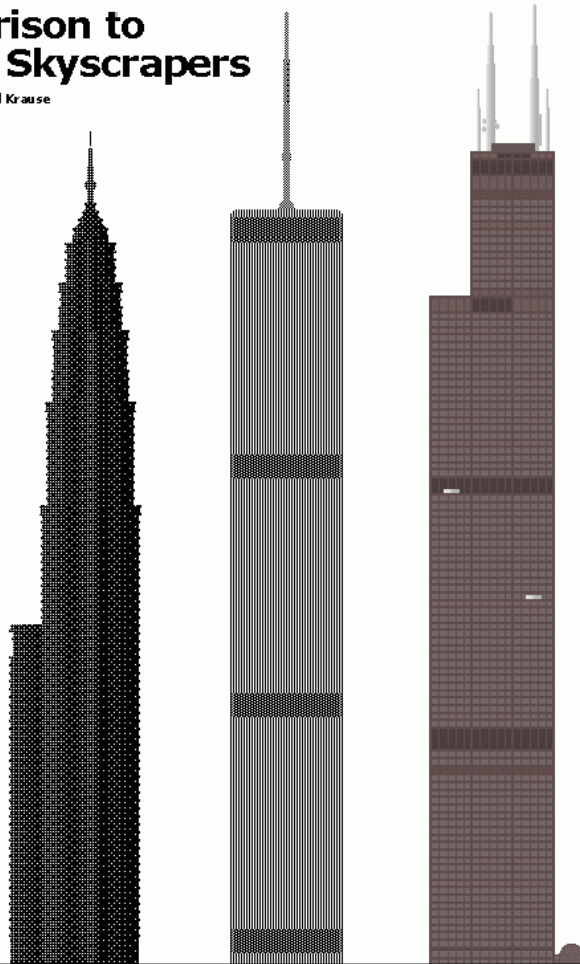


Skidmore, Owings and Merrill, Fazlur Kahn and Bruce Graham, Willis Tower, formerly named Sears Tower, 1973



Comparison to Similar Skyscrapers

(c) 1997-2006 Randall Krause



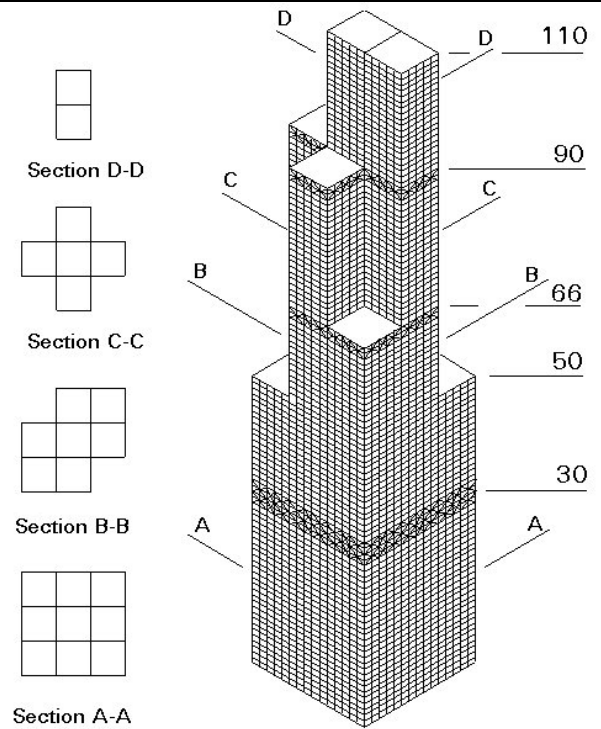
Petronas Tower

One World Trade Center

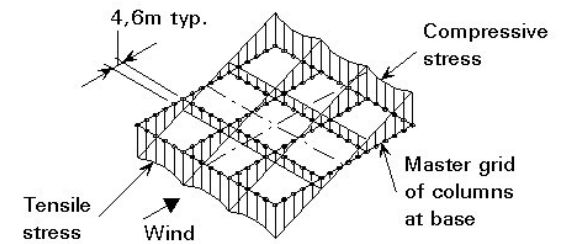
Sears Tower

Researched and drawn by
Randall Krause, ISMA '97

<http://www.searstower.org/>



(a) Modular floor configurations



(b) Shear lag behaviour

Figure 10 Sears Tower, Chicago, Illinois









